



Cambridge International Examinations
Cambridge Ordinary Level

CANDIDATE
NAME

CENTRE
NUMBER

| | | | | | |
|--|--|--|--|--|--|
| | | | | | |
|--|--|--|--|--|--|

CANDIDATE
NUMBER

| | | | | |
|--|--|--|--|--|
| | | | | |
|--|--|--|--|--|



COMPUTER SCIENCE

2210/23

Paper 2 Problem-solving and Programming

October/November 2016

1 hour 45 minutes

Candidates answer on the Question Paper.

No Additional Materials are required.

No calculators allowed.

READ THESE INSTRUCTIONS FIRST

Write your Centre number, candidate number and name in the spaces at the top of this page.

Write in dark blue or black pen.

You may use an HB pencil for any diagrams, graphs or rough working.

Do not use staples, paper clips, glue or correction fluid.

DO NOT WRITE IN ANY BARCODES.

Answer **all** questions.

DO NOT ATTEMPT TASKS 1, 2 AND 3 in the pre-release material; these are for information only.

You are advised to spend no more than **40 minutes** on **Section A** (Question 1).

No marks will be awarded for using brand names of software packages or hardware.

At the end of the examination, fasten all your work securely together.

The number of marks is given in brackets [] at the end of each question or part question.

The maximum number of marks is 50.

This document consists of **11** printed pages and **1** blank page.

You are advised to spend no longer than 40 minutes answering this section.

Here is a copy of the pre-release material.

DO NOT attempt Tasks 1, 2 and 3 now.

Use the pre-release material and your experience from attempting the tasks before the examination to answer Question 1.

Pre-release Material

The headteacher of a school needs a program to record and count the votes for a class captain. Each student in the class will be allowed one vote. There can be up to 30 students in a class.

Write and test a program for the headteacher.

- Your program must include appropriate prompts for the entry of data.
- Error messages and other output need to be set out clearly.
- All variables, constants and other identifiers must have meaningful names.

You will need to complete these **three** tasks. Each task must be fully tested.

TASK 1 – Set up the voting

Each class can choose from up to four different students as candidates for their class captain. Set up a routine that allows:

- between two and four different candidate names to be input and stored
- the candidate names to be displayed with a number (1, 2, 3 or 4) beside each name
- a choice of 1, 2, 3 or 4 to be entered to record a vote; all other entries are rejected
- up to four totals set to zero ready to record the votes
- a maximum of 30 votes to be cast

TASK 2 – Record and count each vote

Input a number 1, 2, 3 or 4; add 1 to the appropriate total.

Output the name of the candidate voted for or output 'invalid vote' if a vote is rejected.

TASK 3 – Show the result

When all the votes have been cast, display the candidates' names with their totals in descending order of totals. If there is a clear winner, display the candidate's name with the words 'NEW CLASS CAPTAIN' beside it; otherwise display 'NO OVERALL WINNER'.

1 (a) All variables, constants and other identifiers should have meaningful names.

For **four** of the variables, constants or arrays that you used in **Task 1**, state the name, data structure, data type and its use.

Name 1

Data structure

Data type

Use

Name 2

Data structure

Data type

Use

Name 3

Data structure

Data type

Use

Name 4

Data structure

Data type

Use[8]

2 Read this section of program code that:

- inputs 10 numbers
- checks whether each number is within a specified range
- totals the numbers within the range and outside the range

```

1 InRange = 0
2 OutRange = 1000
3 FOR Count = 1 TO 10
4     INPUT Num
5     IF Num > 10 AND Num < 20 THEN InRange = InRange + 1
6     ELSE OutRange = OutRange - 1
7 Count = Count + 1
8 NEXT X
9 PRINT InRange, OutRange

```

(a) There are four errors in this code.

Locate these errors and suggest a correction to remove each error.

Error 1.....

Correction

.....

Error 2.....

Correction

.....

Error 3.....

Correction

.....

Error 4.....

Correction

.....[4]

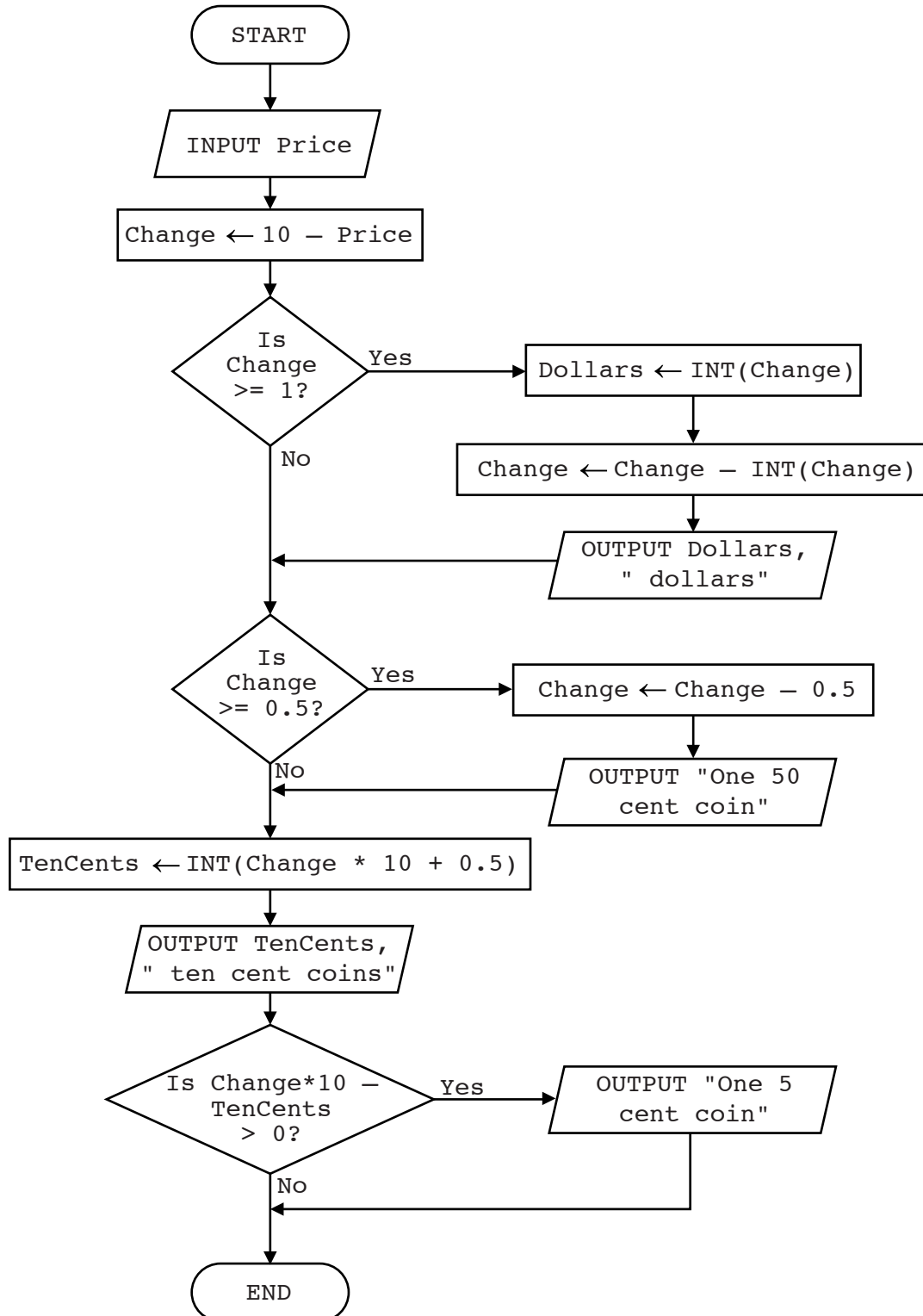
(b) Decide, with reasons, whether the numbers 10 and 20 are within or outside a range.

| Number | Within range (✓) | Outside range (✓) | Reason |
|--------|------------------|-------------------|----------------|
| 10 | | | |
| 20 | | | |

[4]

- 3 The flowchart below inputs the price of an item under \$10. The change from a \$10 note is computed. Any amount less than 5 cents is rounded up to 5 cents.

The predefined function `INT` rounds a number down to the nearest whole number; for example $Z \leftarrow \text{INT}(5.7)$ gives the value $Z = 5$



Complete the trace table for the input data: 6.29

| Price | Change | Dollars | TenCents | OUTPUT |
|-------|--------|---------|----------|--------|
| | | | | |
| | | | | |
| | | | | |
| | | | | |
| | | | | |
| | | | | |
| | | | | |
| | | | | |
| | | | | |
| | | | | |
| | | | | |
| | | | | |

[5]

4 Four validation checks and four descriptions are shown below.

Draw a line to link each validation check to the correct description.

| Validation check | Description |
|------------------|---|
| Presence check | Numbers between two given values are accepted |
| Range check | Data is of a particular specified type |
| Type check | Data contains an exact number of characters |
| Length check | Ensures that some data have been entered |

[3]

5 REPEAT ... UNTIL and WHILE ... DO ... ENDWHILE are two different loop structures you can use when writing pseudocode.

Explain, using examples, why you would choose to use each type of loop.

Example 1
.....
.....
.....

Reason for choice
.....
.....

Example 2
.....
.....
.....

Reason for choice
.....
.....[6]

- 6 A database, THEATRETOURS, was set up to show the tour dates, towns, number of seats and prices in local currency for a Shakespeare play.

| Town | Tour Date | Number of Seats | Price Local Currency |
|----------------|------------|-----------------|----------------------|
| Wigan | 18/08/2016 | 120 | 15.00 |
| Dumfries | 20/08/2016 | 160 | 12.50 |
| Turin | 25/08/2016 | 200 | 17.00 |
| Macon | 27/08/2016 | 75 | 18.00 |
| Bordeaux | 29/08/2016 | 170 | 20.00 |
| Algiers | 01/09/2016 | 125 | 1350.00 |
| Windhoek | 05/09/2016 | 65 | 90.00 |
| Windhoek | 06/09/2016 | 65 | 90.00 |
| Port Elizabeth | 10/09/2016 | 200 | 110.00 |

- (a) Explain why none of the fields in the database can be used as a primary key.

.....

[2]

- (b) State a field that could be added as a primary key.

.....
 Give a reason for choosing this field.

[2]

- (c) Use the query-by-example grid below to provide a list of tour dates and seat prices in alphabetical order of town.

| | | | | |
|-----------|--------------------------|--------------------------|--------------------------|--------------------------|
| Field: | | | | |
| Table: | | | | |
| Sort: | | | | |
| Show: | <input type="checkbox"/> | <input type="checkbox"/> | <input type="checkbox"/> | <input type="checkbox"/> |
| Criteria: | | | | |
| or: | | | | |

[4]

Permission to reproduce items where third-party owned material protected by copyright is included has been sought and cleared where possible. Every reasonable effort has been made by the publisher (UCLES) to trace copyright holders, but if any items requiring clearance have unwittingly been included, the publisher will be pleased to make amends at the earliest possible opportunity.

To avoid the issue of disclosure of answer-related information to candidates, all copyright acknowledgements are reproduced online in the Cambridge International Examinations Copyright Acknowledgements Booklet. This is produced for each series of examinations and is freely available to download at www.cie.org.uk after the live examination series.

Cambridge International Examinations is part of the Cambridge Assessment Group. Cambridge Assessment is the brand name of University of Cambridge Local Examinations Syndicate (UCLES), which is itself a department of the University of Cambridge.